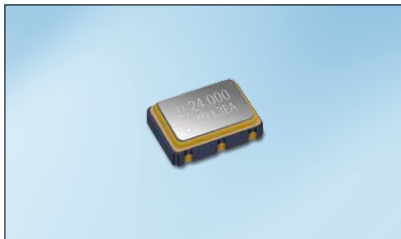


160-E/F Series

SMD CERAMIC ENCLOSURE QUARTZ CRYSTAL OSCILLATORS 表貼石英晶體振盪器

Standard crystal oscillators



FEATURES

- Small size
- High reliability seam welded package
- Pick and place assembly
- Low supply voltage version available

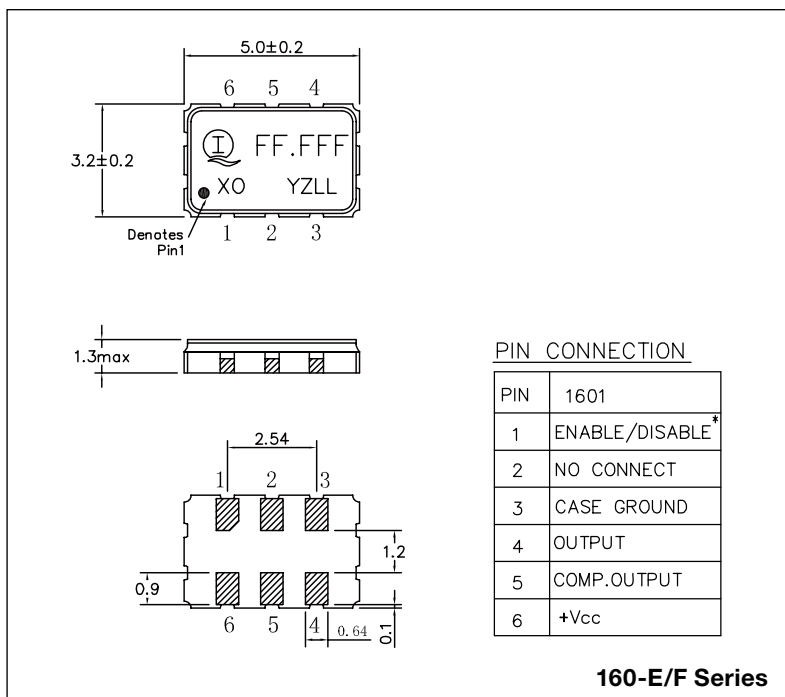


Parameters		Specifications	
Series 系列		160-E Series	160-F Series
Output Waveform 輸出波形		LVPECL	LVDS
Frequency Range 頻率範圍		10MHz ~ 800MHz	
Supply Voltage Range (Vdd) 工作電壓範圍		2.5V , 3.3V	
Overall Frequency Stability with refer to 25°C** 相對於 25°C 的總頻率偏差 **		±25ppm, ±30ppm, ±50ppm	
Operating Temperature Range 工作溫度範圍		-20°C ~ +70°C , -40°C ~ +85°C	
Current Consumption (Idd) 消耗電流		100mA Max.	
Rise & Fall Time 上 / 下沿時間		1.5ns Max.	
Output Symmetry 輸出對稱性		45% ~ 55%	
Output Voltage 輸出電壓	VOH	Vdd - 1.025V Min.	1.40V Typ.
	VOL	Vdd - 1.620V Max.	1.10V Typ.
Output Load 輸出負載		50ohm	100ohm
Start-up Time 起動時間		10ms Max.	
Storage Temperature Range 儲存溫度範圍		-55°C ~ +125°C	

** Inclusive of initial frequency tolerance at 25°C, operating temperature range, supply voltage change, load variation and 1st year aging.
包括在常溫頻率偏差、工作溫度範圍的頻率偏差、首年老化率、工作電壓及負載變化造成的頻率偏差。

Please consult our sales representatives for other specifications
如對其他規格查詢，請與我司銷售人員聯繫

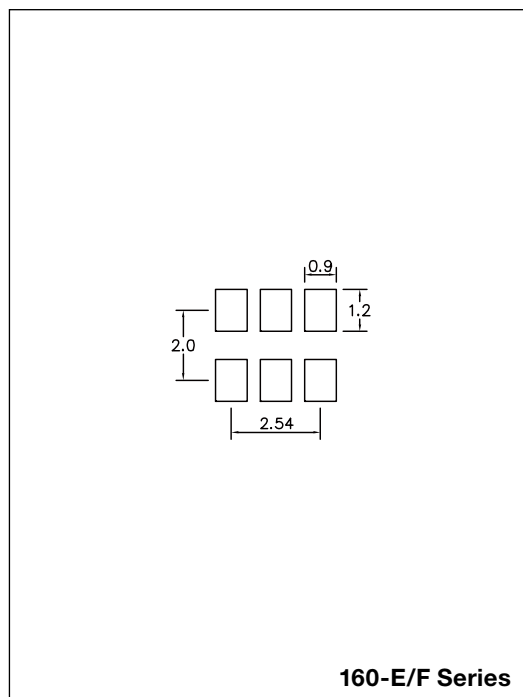
DIMENSION (mm)



PIN CONNECTION

PIN	1601
1	ENABLE/DISABLE*
2	NO CONNECT
3	CASE GROUND
4	OUTPUT
5	COMP.OUTPUT
6	+Vcc

SOLDERING PATTERN (mm)



All specifications are subject to change without prior notice.
本公司保留修改規格的權利。

I **INTERQUIP ELECTRONICS CO LTD**
應達利電子有限公司

Flat A, 9th Floor, On Shing Industrial Building, 2-16 Wo Liu Hang Road, Fotan, N.T., Hong Kong
Tel: +852 2413 5515 Fax: +852 2413 7053 <http://www.interquip.com>

